

CUTTING THE HAIR:

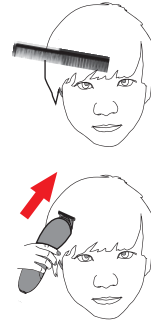
The first time you cut hair, cut only a small amount until you become familiar with how each of the guide combs cuts hair.

Always start by placing the largest guide comb on the clipper, then use shorter combs if a shorter length is desired.

The hair grows evenly all over the head, and a light trimming the lower neck and sides may be all that is needed to bring back that neat, well-groomed look.

For uniform cutting, allow the clipper to cut its way through the hair. Do not force it through at a faster rate.

1. Start by combing the hair, so it falls in its natural direction.
2. Place the most extensive guide comb onto your clipper and start by trimming the sides from the bottom upwards.
3. Hold the clipper lightly against the hair, with teeth of the guide comb facing upwards but flat against the head.
4. Slowly lift the clipper up and outward through the hair, cutting only a small amount at a time.
5. Repeat around the sides and back of the head.



If you desire shorter hair, either change to a shorter guide comb or apply more pressure and less lift away from the head with the present attachment.

This entire procedure requires practice, and it is always better to leave too much hair in the first few haircuts.

ATTENTION: Do not use this appliance if the teeth from the blade are damaged or missing, or if the blades are misaligned as severe injury may occur.

CLEANING AND MAINTENANCE:

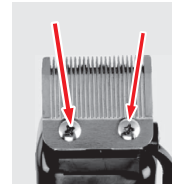
CLEANING:

ATTENTION: DO NOT IMMERSE THIS APPLIANCE IN WATER! AFTER EACH USE:

1. Switch OFF the Hair clipper.
2. Remove the attachment comb.
3. Use the cleaning brush to remove the hair clippings from the blade and comb attachments.
4. Wipe the hair clipper with a soft and dry cloth.

CLEANING THE BLADE SET:

5. Switch OFF the Hair clipper.
6. Remove the attachment comb.
7. Loosen and remove the screws on the blade set.
8. Use the Cleaning brush to remove the hair clippings from the blade.
9. Wipe the hair clipper with a soft and dry cloth.
10. Place the blade on its place, and insert and tighten the two screws.



STORING:

Store the unit in such a manner so that blades are protected from damage. When the clipper is not in use, the clipper guide comb/blade guard attachment should be in place to protect the blades.

OILING BLADES:

For best results, put one or two drops of hair clipper oil on the blades before and after every use. Motor bearings are permanently lubricated—do not attempt to oil. When oiling your clipper, turn the clipper on, hold the unit with the blades facing DOWN and squeeze one or two drops of oil onto the blades. Turn off the hair clipper, and wipe off excess oil with a soft cloth.

CAUTION: DO NOT OVER OIL! Excessive oiling or application of liquids will cause damage if allowed to seep back into the motor.

TECHNICAL SPECIFICATIONS:

Model: UP1100
Voltage: 127V/60Hz
Power: 12W



Your purchase comes with a 100% satisfaction guarantee from Müller

If you are not happy with the product for any reason, please contact us at support@muellerdirect.com or 888-632-9981 with your feedback or questions, and we will do our best to make things right for you!

Müller USA

168 Mason Way Unit #4A,
City of Industry, CA 91746

Telephone: (888) 632-9981
E-mail: support@muellerdirect.com
Web: www.muellerdirect.com



ULTRAGROOM PRO HAIRCUTTING KIT

Model: UP-1100



USER MANUAL

Your satisfaction is guaranteed. If you are not completely satisfied with our ULTRAGROOM Pro Haircutting Kit, and the results it brings, we insist that you let us know. We'll help you make the haircutting kit work for you, or we'll refund your money.

IMPORTANT SAFEGUARDS

When using an electric product, basic precautions should always be followed, including the following: Read all instructions before using this product.

TO REDUCE THE RISK OF ELECTRIC SHOCK:

- The product, power cord, and the accessories connected to it are NOT for water immersion or use in the shower.
- Do not use an extension cord with this product.
- Do not charge, use or store the Hair clipper or leave it lying in a bathroom or in locations where it could fall into a bath, washbasin, or other containers filled with water.
- Do not place or drop the product or the power cord in water or other liquid.
- Always unplug this product from the electrical outlet immediately after use.
- Unplug the power supply cord from the wall outlet before cleaning.

TO REDUCE THE RISK OF BURNS, FIRE, ELECTRIC SHOCK, OR INJURY TO PERSONS:

- Close supervision is required when this product is used by, on, or near children or persons with limited physical, sensory, or mental capabilities or invalids.
- Use this product for its intended household use, as described in this manual. Do not use attachments not recommended by the manufacturer.
- Never operate this product if it has a damaged power cord, if it is not working properly, after it has been dropped or damaged, or dropped into water while plugged in.
- Make sure that the power cord does not hang over the edge of a table and that it is not touching a heated surface.
- Keep the appliance and its power cord dry.
- Do not wind the power cord around the handle of the Hair clipper.
- Do not connect and disconnect the power cord to and from the power socket with wet hands.
- Do not place the Hair clipper and its accessories near heaters, open fires, or other sources of heat.

- Do not clean the Hair clipper under a water tap, do not spray it with water or any other liquid or submerge it in water or any other liquid.
- Before every use, check the cutting unit and comb attachments for damage. Never use a Hair clipper with a damaged cutting unit or comb attachment.
- The Hair clipper may heat up during use or when it is charged—this is completely normal.
- Keep the Hair clipper at a safe distance from the eyes.
- Always turn off the Hair clipper and disconnect it from the power socket when not using it, when leaving it without supervision and before attaching, removing or replacing comb attachments, and before cleaning, maintenance or storage. Store the Hair clipper and its power adapter in a dry environment.
- Keep the Hair clipper clean. Perform cleaning and maintenance according to the instructions in "Cleaning and maintenance" section of this manual.
- Only use the cutting blade lubricating oil by following the instructions in this user's manual and store it out of children's reach. Keep the oil at a safe distance from the eyes and sources of heat.
- Do not perform any maintenance on the Hair clipper other than cleaning the individual parts of the Hair clipper as described in chapter "Cleaning and Maintenance".
- Do not use the Hair clipper if it has fallen on the floor, if it was submerged in water, if it is not functioning correctly or if it is damaged in any other way.
- Do not use it outdoors.
- To prevent a hazardous situation arising, do not repair the Hair clipper or any of its accessories yourself or modify it in any way.
- This Hair clipper is intended for home use only and is designed for cutting human hair. The Hair clipper is not intended for commercial purposes or for trimming animal fur.
- This Hair clipper is safe to use to cut children's hair.
- Do not use the Hair clipper on wet or just washed hair or on beard on which a shaving foam or gel, etc. has been applied.
- Use the Hair clipper and the individual comb attachments by following the instructions contained in this user manual.

MEET YOUR ULTRAGROOM PRO HAIRCUTTING KIT



USING YOUR ULTRAGROOM PRO HAIRCUTTING KIT

BEFORE THE FIRST USE:

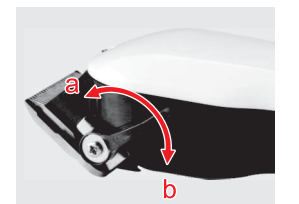
For best results, put one or two drops of hair clipper oil on the blades before and after every use. Motor bearings are permanently lubricated—do not attempt to oil. When oiling your clipper, turn the clipper on, hold the unit with the blades facing DOWN and squeeze one or two drops of oil onto the blades. Turn off the hair clipper, and wipe off excess oil with a soft cloth.

CAUTION: DO NOT OVER OIL! Excessive oiling or application of liquids will cause damage if allowed to seep back into the motor.

NOTE: A slight warming of the appliance and vibrations during use are normal.

CUTTING-LENGTH ADJUSTMENT:

This hair clipper is equipped with an adjustable Thumb lever that changes the closeness of your cut. When the lever is in the uppermost position, the blades will give the closest cut. Pushing the lever downwards gradually increases the cutting length.



ATTACHING/REMOVING THE ATTACHMENT COMB:

- Place the attachment comb onto the cutting plate of the cutting blade and press it down until it clicks into position.
- The attachment comb can be easily removed by lifting the hook at the base of the comb in the direction of the arrow.

