

Müller
AUSTRIA

ULTRA BREW

Thermal Coffee Maker



Model:
DC-760

USER
MANUAL

IMPORTANT SAFEGUARDS

When using electrical appliances, basic safety precautions should always be followed to reduce the risk of fire, electric shock, and/or injury to persons, including the following:

- Read all instructions.
- Make sure that your outlet voltage corresponds to the voltage stated on the rating label of the coffee maker.
- Always unplug the unit from the outlet when not in use and before cleaning. Allow the unit to cool before putting on or taking off parts and before cleaning it.
- To protect against fire, electric shock and injury, do not submerge the cord or the plug in water or other liquids.
- This appliance is not intended for use by persons (including children) with reduced physical, sensory or mental capabilities, or lack of experience and knowledge unless they have been given supervision or instruction concerning use of the appliances by a person responsible for their safety.
- Do not operate the appliance with a damaged cord or plug or after the appliance malfunctions, or has been damaged in any manner—return the appliance to an authorized service facility for examination, repair, or adjustment.
- Do not touch hot surfaces. Use handles and knobs.
- The use of accessory not recommended by the appliance manufacturer may result in fire, electric shock, or injury.
- Do not use the unit outdoors.
- Do not let the cord hang over the edge of a table or counter or touch hot surfaces.
- Do not place the unit on or near a hot gas or electric burner or in a heated oven.
- Do not use the unit for other than its intended use.
- Always fill the water reservoir first, then plug the cord into the wall outlet.

- Do not clean the carafe with cleansers, steel wool pads, or other abrasive material.
- **Scalding may occur if the Top Lid is removed during the brewing cycle.**
- The Stainless Steel Carafe is designed for use with this coffee maker only. It must never be used on a range top.
- Never leave the empty carafe on the warming plate when the plate is warm; otherwise, the carafe might crack.
- Do not place a hot carafe on a wet, hot, or cold surface.
- Do not use a cracked carafe or a carafe having a loose or weakened handle.
- **WARNING: TO REDUCE THE RISK OF FIRE OR ELECTRIC SHOCK, DO NOT REMOVE THE BASE PANEL. NO USER-SERVICEABLE PARTS ARE INSIDE. REPAIRS SHOULD BE DONE ONLY BY AUTHORIZED PERSONNEL.**
- Do not operate the coffee maker without water.
- Do not place cloth beneath the coffee maker.
- This appliance is intended for household use only.

SAVE THESE INSTRUCTIONS **FOR HOUSEHOLD USE ONLY**

ELECTRICAL REQUIREMENTS

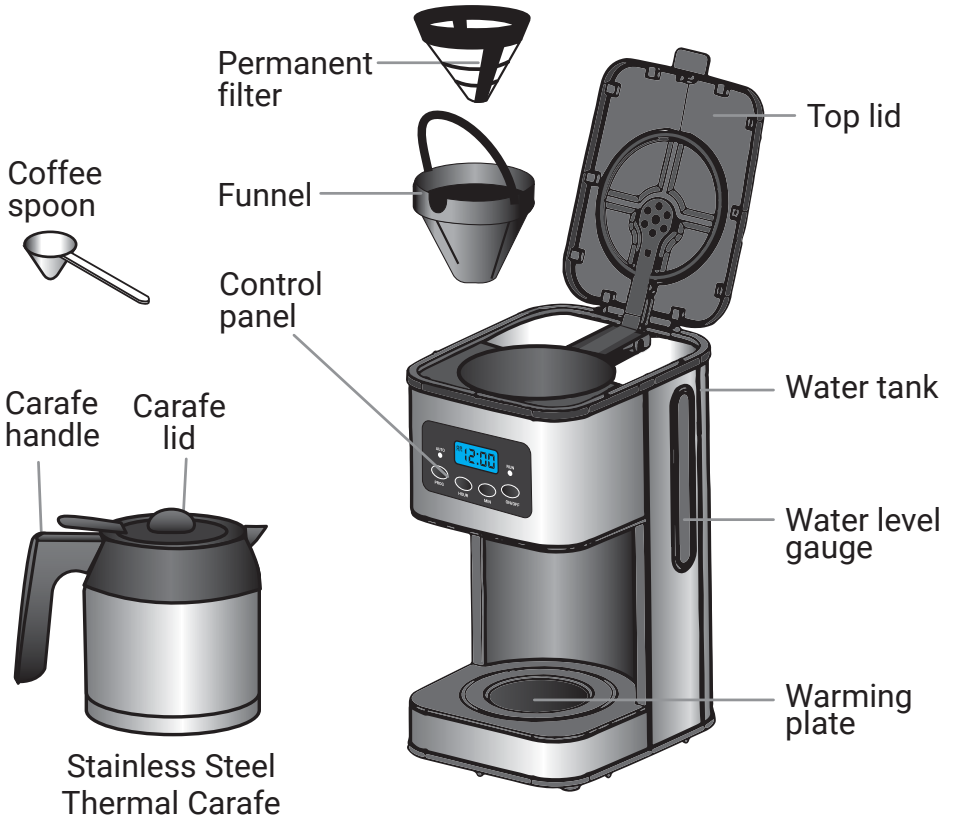
Voltage: 120V ~ 60 Hz

Power: 900W

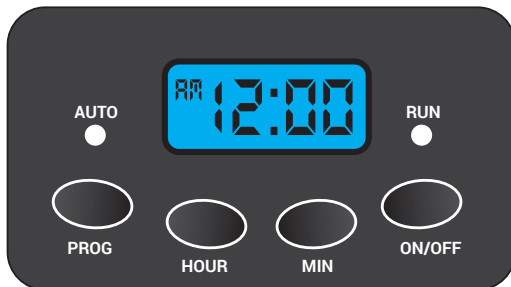
NOTE: Your Coffee Maker has a two-prong plug. To reduce the risk of electrical shock, this plug will fit in an outlet only one way. If the plug does not fit in the outlet, contact a qualified electrician. Do not modify the plug in any way.

KNOW YOUR COFFEE MAKER

PARTS



Control panel



USING YOUR COFFEE MAKER FOR THE FIRST TIME

Check that all accessories are there, and the unit is not damaged.

- ! **IMPORTANT: make sure to perform these steps before brewing your coffee for the first time!**

Fill water into the water tank to the MAX level and brew water several times without coffee powder, then discard the water. Clean and dry all detachable parts thoroughly according to the section "CLEANING AND MAINTENANCE".

HOW TO MAKE COFFEE

1. Open the Top Lid and **fill the water tank** with drinking water. The water level should not exceed the MAX level, as indicated on the water level gauge. The water tank capacity is 1L (34oz).

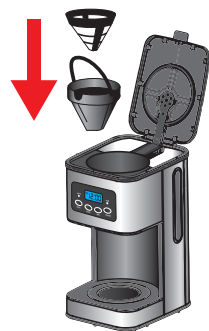
NOTE: For best results, always use cold, fresh tap water.



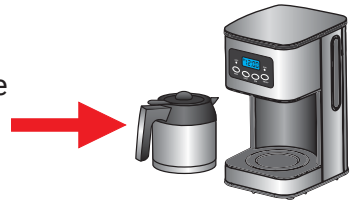
2. Install the **funnel** properly and then place the **permanent filter** into the funnel. Make sure both parts are assembled correctly; otherwise, the Top Lid cannot be closed.

3. **Add coffee powder** into the permanent filter. Close the Top Lid completely.

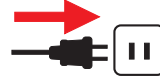
NOTE: Usually, a cup of coffee needs a level spoon of coffee powder, but you may adjust according to personal taste.



4. **Insert the carafe with closed lid** onto the warming plate.



5. **Plug the power cord** into the outlet. The LCD will display "AM 12:00".



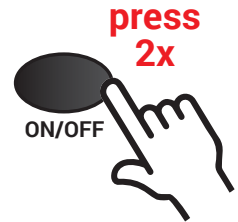
6. Press the **ON/OFF button**. The RUN indicator will turn red, and the appliance will begin to work.



- *The coffee maker will take around 10 minutes to brew your coffee, depending on the amount of coffee and water you are using.*



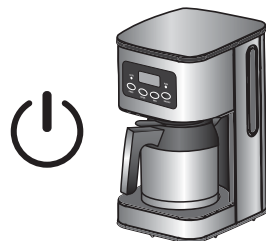
- *The brewing process can be interrupted at any time by pressing the ON/OFF button TWICE. The appliance will continue brewing once the ON/OFF button is pressed again.*



- *You can take out the carafe, pour, and serve your coffee at any time. The appliance will automatically stop dripping for 30 seconds.*



7. Once the brewing is completed, if you do not want to serve immediately, coffee can be kept warm in the carafe on the warming plate. The appliance will shut off automatically after the brewing process.



- The coffee you get will be less than the water you have added, as the coffee grounds absorb some water.
- For an optimum coffee taste, serve it just after brewing.
- Be careful while pouring the hot coffee to avoid any mishap.



8. Always disconnect the coffee maker from the power supply when not in use.



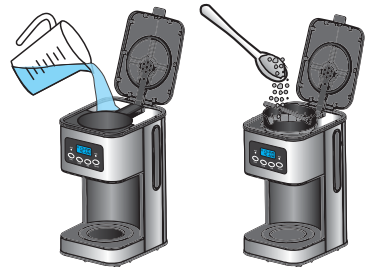
DELAY FUNCTION

The Delay Brew function lets users program the appliance to automatically brew coffee at a later time within a 24-hour period. This is a helpful feature for people who, for example, don't have time to prepare coffee and wait for it to brew in the morning.

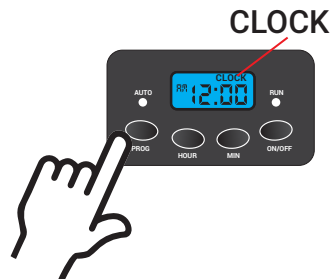
Let's say you would like the coffee maker to start brewing your coffee at 8:15 AM.

To set up the delay-brew, follow these steps:

1. Add water and coffee grounds to the coffee maker as you normally would.



2. Press the PROG button, and the word "CLOCK" will appear in the upper-right corner of the display, showing the current time.



3. To set the current time, press the "HOUR" and "MINUTE" buttons separately until the numbers change to the correct hour and minute.

Note: The time cycle is 12 hours, so for example, if the time is PM, the clock will show a "PM" symbol.

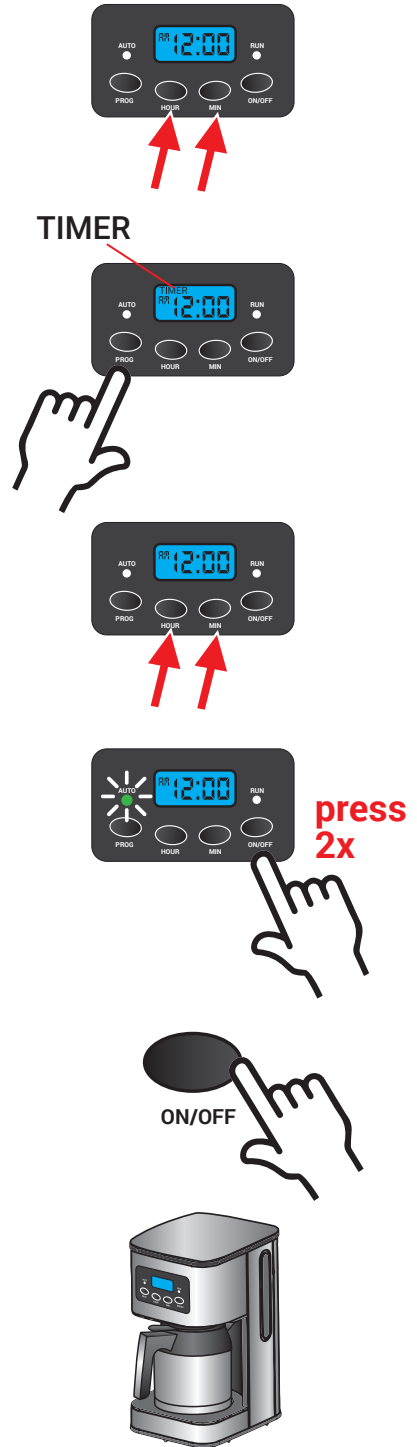
4. Press the PROG button again, and the word "TIMER" will appear in the upper-left corner of the display, showing the delayed brew time.

5. To set the time when you want the brewing process to start, press the "HOUR" and "MINUTE" buttons separately.

6. Press the ON/OFF button twice: the AUTO indicator will illuminate, and the LCD will display the current time. You can always check the preset delayed start time by pressing the PROG button.

Note: If you want to cancel the delay brew setting, press the ON/OFF button once. If, however you want to cancel the delay brew setting AND start the brewing process immediately, press the ON/OFF button twice - the RUN indicator will illuminate, and the unit will start the brewing process.

7. When the time is due, the AUTO indicator light will go out, the RUN indicator will illuminate, and the unit will start the brewing process.



CLEANING AND MAINTENANCE

CAUTION! Always turn the coffee maker off and remove the plug from the electrical outlet before cleaning. To protect against electrical shock, do not submerge the cord, plug, or the unit in the water or liquid.

- Lift the Top Lid, remove all removable parts such as Permanent Filter, Funnel, and Carafe, and wash them with warm soapy water.

NOTE: Do not put any water in the unit once the filter and funnel have been removed. Wipe that area with a damp cloth.

- Never immerse the unit in water or other liquid. To clean the exterior surface, simply wipe with a clean, damp cloth, and dry before storing it.

- Water droplets may build up in the area above the funnel and drip onto the product base during brewing. To prevent the build-up, wipe off the area with a clean, dry cloth after each use.

- Use a clean, damp cloth to clean the warming plate. Never use rough, abrasive materials or cleansers to clean the warming plate.

- Do not dry the inside of the water tank with a cloth, as lint may remain.

- Keep your coffee maker in a dry and cool place.

REMOVING MINERAL DEPOSITS

Depending on the mineral content of your water, calcium deposits or scale may build up in your coffee machine. Regularly descaling your brewer every 3-6 months helps maintain the heating element and other internal parts that come in contact with water. Calcium deposits may build up faster, making it necessary to descale more often.

We recommend removing mineral deposits as follows:

1. Fill the water tank with the water-vinegar solution to the **MAXIMUM** level as indicated on the Water level gauge (the water-vinegar ratio should be 1:1). You may also use citric acid to create the descaler solution by mixing 100 ml (3.4oz) of water with 3 ml (0.1oz) of citric acid.

2. Make sure the funnel and the filter are in place.

3. Place a coffee cup onto the warming plate.
4. Start a brew cycle by pressing the ON/OFF button and midway through the brew cycle, press the ON/OFF button TWICE to interrupt the brewing process. Let the solution sit for 30-60 minutes, depending on how much build-up you need to clear away.
5. After 30-60 minutes, press again the ON/OFF button and let the brew cycle finish.
6. Perform the brew cycles until there is no more water-vinegar solution inside the water tank, allowing your coffee maker to cool between brews.
7. Rinse the funnel, filter, and water tank with water a couple of times.
8. Fill the water tank with fresh water to the MAX fill line and perform the brew cycles until the water tank is empty, allowing your coffee maker to cool between brews.

TIPS FOR GREAT-TASTING COFFEE

- A clean coffee maker is essential for making great-tasting coffee.
- Regularly clean the coffee maker as specified in the “CLEANING AND MAINTENANCE” section.
- Always use fresh, cold water in the coffee maker.
- Store the coffee powder in a cool, dry place. After opening a package of coffee powder, reseal it tightly and store it in a refrigerator to maintain its freshness.
- For an optimum coffee taste, buy whole coffee beans and finely grind them just before brewing.
- Do not reuse coffee powder since this will significantly reduce the flavor. Reheating coffee is not recommended because coffee is at its ultimate flavor right after brewing.

Your satisfaction is guaranteed. If you are not completely satisfied with our ULTRA BREW Thermal Coffee Maker, and the results it brings, we insist that you let us know. We'll help you make the ULTRA BREW Thermal Coffee Maker work for you, or we'll refund your money.





Your purchase comes with a 100% satisfaction guarantee from Müller

If you are not happy with the product for any reason, please contact us at **support@muellerdirect.com** or **888-632-9981** with your feedback or questions, and we will do our best to make things right for you!

Müller USA

2720 Pellissier Place, Ste 73D
City of Industry, CA 90601

Telephone: (888) 632-9981

E-mail: support@muellerdirect.com

Web: www.muellerdirect.com
