



GOOSENECK KETTLE

Pour Over Drip Set

Model: GS-710



INSTRUCTION MANUAL

Make the perfect pour-over coffee with the Gooseneck Kettle. This 3-piece kit includes a stainless steel Gooseneck Kettle with electric base, glass pour-over coffee dripper, and stainless steel permanent filter.

- The long neck of the Gooseneck Kettle design gives you a **slow, controlled, and precise flow of water**, perfect for extracting the most flavor when you brew coffee or tea.
- Boil up to **1L (34oz)** of water for pour-over coffee, or for tea, French press, and more.
- **One-touch operation** for quick and easy water boiling.
- **Auto Shut-off** feature gives you peace of mind while multi-tasking in the kitchen - the kettle automatically shuts off after the water boils.
- **Boil-dry protection** prevents damage by shutting off the kettle if it is empty.
- **360° Swivel Base** for easy and comfortable pouring.
- **Under-base cord storage** keeps your cord protected and your counter neat.
- The **cordless** kettle and its ergonomic design make it easy to carry and pour without straining the wrist.
- The **matte black finish** on the entire kettle offers an elegant and sleek look for any countertop.
- The Gooseneck Kettle is **100% food-grade stainless steel**. The seamless stainless steel construction is stain and corrosion-resistant designed to last longer.
- Water level lines are marked within the interior of the kettle. With **no unnecessary plastic water level window**, no plastic or glue comes into contact with the water, offering healthier and better tasting water and easy cleaning.

Your satisfaction is guaranteed. If you are not completely satisfied with our Gooseneck Kettle and the results it brings, we insist that you let us know. We'll help you make the Gooseneck Kettle work for you, or we'll refund your money.

IMPORTANT SAFEGUARDS

When using this appliance, always follow the safety precautions listed below.

- Read all instructions before using the appliance.
- Make sure that the voltage indicated on the rating plate of the appliance corresponds to your outlet voltage.
- Check the appliance and power cord for visible damage before usage. Do not attempt to operate or repair if damaged or if the product malfunctions in any way. For assistance, contact Mueller support.
- Always use and store this appliance on a flat, level, stable surface, away from any ledge.
- Do not place the appliance or the power cord on or near a stovetop, open flame, or other heated surfaces.
- Carefully position the power cord so no one can become entangled and so that it is not a tripping hazard.
- For added safety, this appliance should always remain unplugged when not in use.
- To allow optimal airflow and avoid overheating, always allow at least a 4-inch clearance on all sides of the appliance when in use and while cooling down.
- This appliance may release heat, steam, and hot water during and after operation. Use extreme caution when handling to prevent the risk of burns, scalding, or other injuries and damage to your property.
- To reduce the risk of burns or scalding, use caution when handling this appliance during and immediately after use.
- Ensure that the kettle is switched off before removing it from its stand.
- Do not fill the kettle when positioned on the base. If any drips, dry the water on the bottom of the body before placing it onto the Base.
- Never fill the kettle beyond the maximum level indication. If the kettle is overfilled, boiling water may be ejected, which may cause a scalding hazard.
- Do not operate the kettle if the water is below the minimum level (150ml/5oz).

- All parts should be completely dry before assembling, using, or storing.
 - Always unplug the kettle and allow it to cool before moving, disassembling, cleaning, or storing.
 - Never immerse the base, motor, power cord or power plug in liquid or expose them to other wet environments.
 - Always follow the cleaning methods recommended in this manual. Never use harsh chemicals or abrasive materials to clean the appliance.
 - The use of accessories not provided with the product may result in damage to the product, electric shock, potential injury or fire.
-
- This appliance is for personal use only and not for any type of commercial use.
 - Do not operate outdoors or in any type of wet or extreme conditions.
 - Do not use this appliance in any way other than for its intended purpose.
 - Do not leave the product unattended while operating.
 - Never allow children to operate, have access to, or leave them unsupervised near this appliance.

POLARIZED PLUG

This appliance is equipped with the polarized plug (one pin is wider than the other). To avoid the risk of electric shock, this plug will fit in a polarized outlet only one way. If the plug does not fit fully into the socket, reverse the plug. If it still does not fit, contact a qualified electrician. Do not attempt to modify the plug in any way as this is a safety feature.



CAUTION: HOT SURFACES! - This appliance generates heat and ejects steam during use. Proper precautions must be taken to prevent the risk of burns, fires, or other injuries and damage to your property.



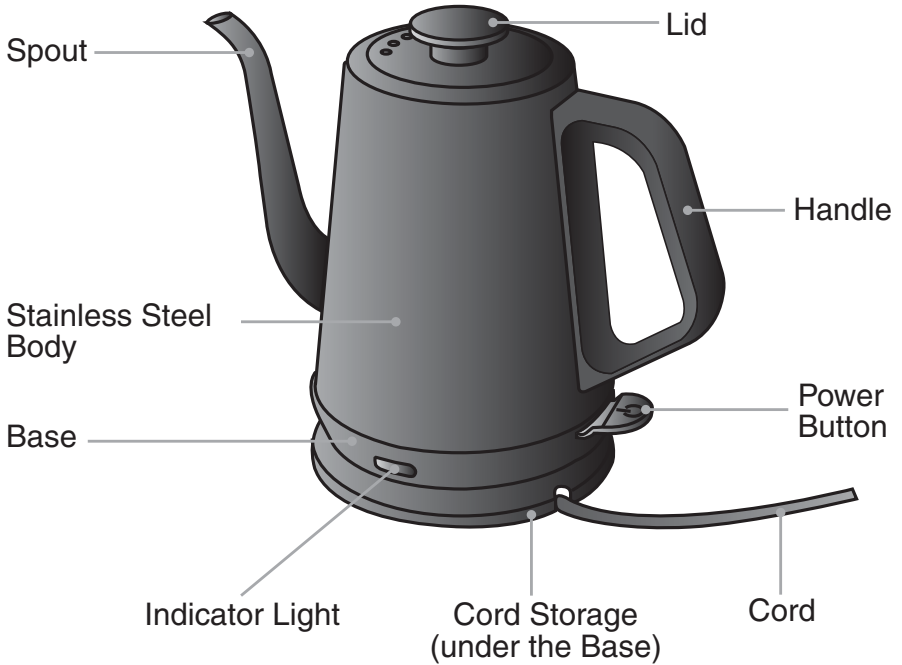
WARNINGS!

- Do NOT fill the kettle with any substance other than water. Heat water only.
- Do NOT operate the kettle without water.
- Do not remove the lid while the water is boiling.
- The kettle and base are NOT dishwasher safe. Do not place them in the dishwasher or submerge in liquid.
- If the appliance is dropped in water, do not reach for it! Switch off and disconnect at the mains and drain the water before retrieving the appliance; do not use the appliance again until a qualified service agent has checked it.

SAVE THESE INSTRUCTIONS
FOR HOUSEHOLD USE ONLY

TECHNICAL INFORMATION		
Rated voltage	Rated power	Water capacity
120V	750W	1L (34oz)

PARTS



Pour Over Coffee Dripper

**Stainless Steel
Permanent
Filter**



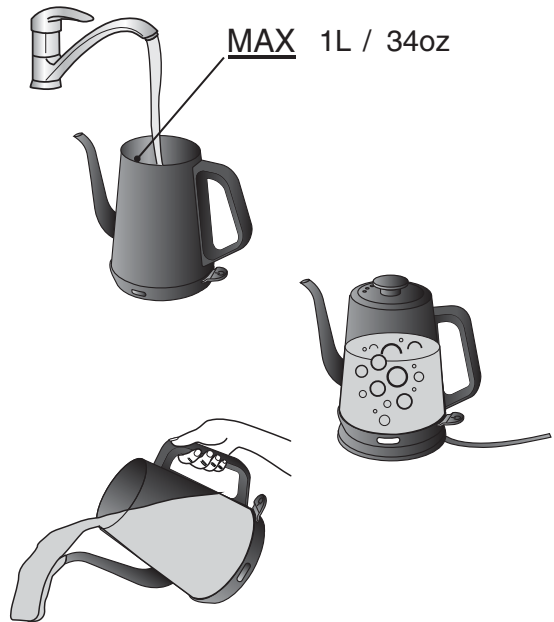
USING THE KETTLE

Before the first use, fill the kettle with fresh water up to the maximum level and let the water boil.

Discard water and repeat this process 2–3 times, rinsing out the inside of the kettle each time.

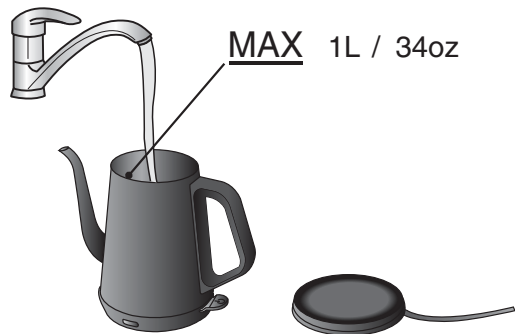
Wipe the outside of the kettle with a clean, damp cloth to remove any factory residue or dust.

The kettle is now ready for use.



1. Place the Base with the kettle on a stable, flat surface.
2. Lift the kettle off the Base. Pull off the Lid to remove from the kettle, and fill the kettle with water. Ensure that the water level is below the MAX fill line (1L/34oz).

NOTE: The minimum amount of water that should be heated is 150ml (5oz).



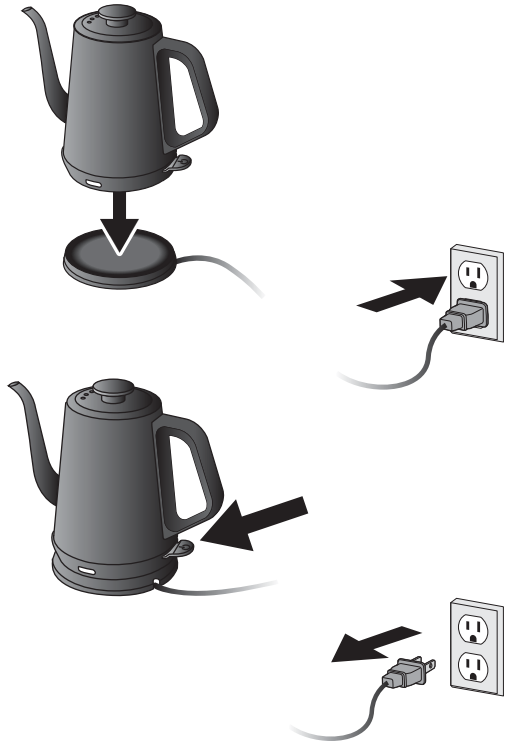
MIN 150ml / 5oz

3. Close the Lid and place the kettle on the Base.

4. Insert the plug into the power outlet and press down on the Power Switch to turn it ON. The light indicator will turn red to indicate that the water is being heated up.

5. When water boils, the kettle and the power indicator light will automatically turn off. Unplug the kettle when not in use.

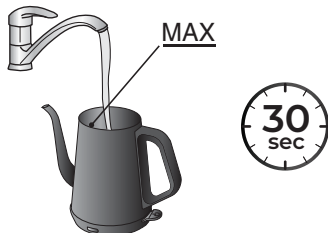
Note: You can also turn the appliance off at any time by lifting the Power switch to the OFF position.



POUR-OVER BREWING

1. Pour cold water into the kettle and bring to a boil.

After the kettle reaches the boil and automatically turns off, let the kettle sit for 30 seconds.



2. Place the filter on top of the glass carafe.

3. Add the desired amount of freshly ground coffee into the filter.

4. Starting at the center of your grounds, gently pour the boiled water onto the grounds (just enough to wet all of the coffee).

5. Let rest for 30 seconds. This allows the coffee to “bloom” before continuing.

6. Continue pouring the remaining water over all the grounds, slowly and in a steady spiral toward the outer edge and then back toward the center.

7. Let rest for 30 seconds after each pour. Continue until you have your desired amount of coffee and then carefully remove the filter.



Experiment until you find the method that brews your perfect cup.

CARE AND CLEANING

! WARNING

- Always unplug the appliance from the power outlet and allow it to cool down before cleaning.
- Do not use chemical, steel wool, or abrasive cleaners to clean the appliance.
- **The kettle and the Base are NOT dishwasher safe.**
- Do not immerse the kettle, Base, or power plug in water or any other liquid.

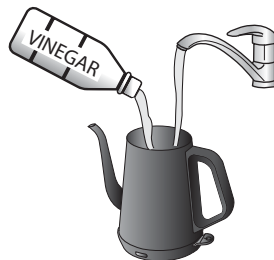
CLEANING

- Wipe the outside of the kettle and the Base with a soft, damp cloth.
- Wash the inside of the kettle with hot water and dish soap and rinse.
- Handwash the lid, glass carafe, and the filter with warm water and dish soap, or in the dishwasher, top-rack only (keep the temperature below 65°C/150°F).

DESCALING THE KETTLE

Depending on the mineral content (also known as "hardness") of the water you use, it is normal for mineral build-up or scaling to occur on the stainless steel interior. Even filtered water contains some minerals, so scaling will likely happen over time. For optimal performance, we recommend decalcifying your kettle regularly to prevent any excessive build-up, which can reduce the efficiency and lifespan of your kettle. Removing mineral deposits can be done using the following method:

1. Fill the kettle with 0.5 liters (17 ounces) of white vinegar and 0.5 liters (17 ounces) of warm water.



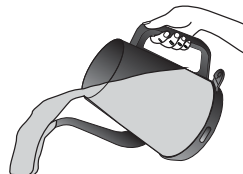
2. Plug the power plug into the power outlet and follow the instructions on how to boil water located in the section USING THE KETTLE.



3. Once the water boils and the kettle shuts off, allow the mixture to sit for at least 1 hour.



4. Pour out the water-vinegar mixture, and rinse with cold water.



5. If mineral deposits remain, you may repeat steps 1 – 4 up to two more times to remove as much of the mineral build-up as possible.



6. After that, repeat steps 1 – 4 but using only water to ensure the interior of the kettle is clean and vinegar-free.

The kettle is now ready for use.



Your purchase comes with a 100% satisfaction guarantee from Müller

If you are not happy with the product for any reason, please contact us at support@muellerdirect.com or **888-632-9981** with your feedback or questions, and we will do our best to make things right for you!

Müller USA

2720 Pellissier Place, Ste 73D
City of Industry, CA 90601

Telephone: (888) 632-9981

E-mail: support@muellerdirect.com

Web: www.muellerdirect.com
