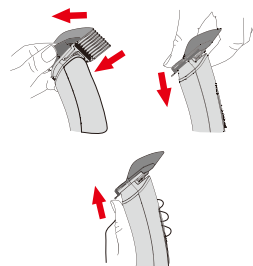


ATTACHMENTS:

To **attach** the guide combs, hold the comb with teeth up and snap it firmly to the bottom of the clipper blade.

To **remove** the guide, gently push up the release tab and slide the guide comb away from the clipper blade.



CUTTING THE HAIR:

The first time you cut hair, cut only a small amount until you become familiar with how each of the guide combs cuts hair.

Always start by placing the largest guide comb on the clipper, then use shorter combs (or settings – if using adjustable guide combs) if a shorter length is desired.

The hair grows evenly all over the head, and a light trimming at lower neck and sides may be all that is needed to bring back that neat, well-groomed look.

For uniform cutting, allow the clipper to cut its way through the hair. Do not force it through at a faster rate.

1. Start by combing the hair, so it falls in its natural direction.
2. Place the most extensive guide comb onto your clipper and start by trimming the sides from the bottom upwards.
3. Hold the clipper lightly against the hair, with teeth of the guide comb pointing up but flat against the head.
4. Slowly lift the clipper up and outward through the hair, cutting only a small amount at a time.
5. Repeat around the sides and back of the head.

If you desire shorter hair, either change to a shorter guide comb (or setting – if using adjustable combs) or apply more pressure and less lift

away from the head with the present attachment.

This entire procedure requires practice, and it is always better to leave too much hair in the first few haircuts.

ATTENTION: Do not use this appliance if the teeth from the blade are damaged or missing, or if the blades are misaligned as severe injury may occur.

CLEANING AND MAINTENANCE:

CLEANING AND STORING:

Before storing your clipper, use the cleaning brush to brush any loose hairs from the unit and the blades. Store the unit in such a manner so that blades are protected from damage. When the clipper is not in use, the clipper guide comb/blade guard attachment should be in place to protect the blades.

OILING BLADES:

For best results, put one or two drops of hair clipper oil on the blades before and after every use. However, if you do not wish to do that, the lubrication indicator light will turn ON at the display as a reminder to lubricate the blades. Motor bearings are permanently lubricated—do not attempt to oil. When oiling your clipper turn the clipper on, hold the unit with the blades facing DOWN and squeeze one or two drops of oil onto the blades. Turn off the hair clipper, and wipe off excess oil with a soft cloth.

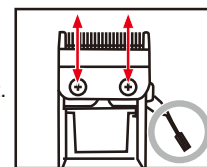
CAUTION: DO NOT OVER OIL! Excessive oiling or application of liquids will cause damage if allowed to seep back into the motor.

CHANGING THE BLADE SET

Blades should be handled carefully and used only for their intended purpose. Never use to cut dirty or abrasive material.

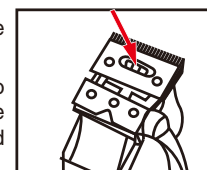
DISASSEMBLING:

1. Switch the hair clipper off using the on/off switch and disconnect from the power supply.
2. Loosen and remove the screws on the blade set.
3. Remove the bottom and top blades; clean or replace as required.



ASSEMBLING:

1. Place the top blade on its place, and position the bottom blade.
2. Insert and tighten the two screws. **NOTE:** No blade alignment is required. Once the screws are tightened, the blades will be automatically aligned to the proper position.



TROUBLESHOOTING:

If your cordless hair clipper is not charging or operating properly, please check the following:

- Check the power outlet current by plugging in another appliance into the outlet.
- Make sure the unit is not connected to a power source that turns itself off when lights are turned off.
- Make sure the hair clipper and power cord contacts are clean and free of hair or other contaminants.
- Verify that the blade assembly moves freely and is mounted properly.

Müller USA

2720 Pellissier Place, Ste 73D, City of Industry, CA 90601
Telephone: (888) 632-9981
E-mail: support@muellerdirect.com
Web: www.muellerdirect.com



Müller
AUSTRIA

ULTRAGROOM Cordless Hair Clippers

Model: UC-1200

110-240V
Dual Voltage
Travel Anywhere

Cord/Cordless
Use

Max Power
Battery

Full charge time
2.5-3 hours

Running time
up to 3 hours



USER MANUAL

Your satisfaction is guaranteed. If you are not completely satisfied with our ULTRAGROOM Cordless Hair Clippers, and the results it brings, we insist that you let us know. We'll help you make the hair clipper work for you, or we'll refund your money.

IMPORTANT SAFEGUARDS:

READ ALL INSTRUCTIONS BEFORE USING THIS APPLIANCE.

When using your electrical appliance, basic safety precautions should always be followed, including the following:

- This appliance may be used by children aged 14 years and above and persons with reduced physical, sensory or mental capabilities, or lack of experience and knowledge, IF they have been given supervision or instruction concerning the use of the appliance in a safe way and fully understand the hazards involved. Children should not play with the appliance. Cleaning and user maintenance should not be performed by a child without adult supervision.

- The hair clipper must be charged only with the original USB cable provided by the manufacturer and charged by a 5V adapter. The use of an alternative power adapter may cause damage to the product or additional hazards.

- Switch off the appliance and unplug from outlet when not in use, before putting on or taking off attachments and also before cleaning the appliance.

- Do not use an extension cord with this product.

- The product, power cord, and the accessories connected to it are NOT for immersion or use in the shower.

- To protect against the risk of electrical shock, never immerse the unit or let it come into contact with water or any other liquids. Do not use the unit with wet hands. If the appliance should become wet, damp, or fall in the water, remove the plug from mains socket immediately. Do not put your hands in the water.

- When plugged in, do not place the product anywhere where it can fall into a tub or sink. Further avoid placing the product or the cord in water or other liquid.

- Do not operate the appliance with a broken cord, plug or charger, if the appliance malfunctions, or if it is dropped or damaged in any way.

- To avoid potential hazards, ensure that the power cord does not hang over the edge of a table and that it is not touching a heated surface.

- The use of attachments that are not supplied by the manufacturer may

cause fire, electric shock, or injury, and damage to the appliance.

- This clipper has a built-in rechargeable battery. Do not throw it into the fire, apply heat, charge, use, or leave in a high-temperature environment.

- Do not wrap the cord around the appliance.

- Never carry the unit by its power cord.

- Do not use the product in rooms where aerosol sprays are used or where oxygen is administered.

- Do not use outdoors or in damp areas.

- This appliance is for household use only.

- Use this appliance only for its intended purpose.

- Any servicing or repair must be performed by an authorized service representative.

MEET YOUR ULTRAGROOM HAIR CLIPPERS

COMPONENTS AND PARTS:



ULTRAGROOM HAIR CLIPPERS



THUMB LEVER:

This hair clipper is equipped with an adjustable Thumb lever that changes the closeness of your cut. You may choose between 4 different levels. When the lever is in the uppermost position, the blades will give the closest cut. Pushing the lever downwards gradually increases the cutting length.

USING YOUR ULTRAGROOM HAIR CLIPPERS

BEFORE THE FIRST USE:

1. Remove the hair clipper, charging cable, and accessories from packing material.
2. Connect the charging cable to the clipper and the computer, or a power outlet. **ATTENTION: BE SURE THAT THE CLIPPER IS IN THE OFF POSITION WHILE CHARGING.**
3. Allow to charge 3 - 5 hours before the first use.
4. During charging, the charge indicator light will be illuminated. Once fully charged, the number on display will reach 100, and you can unplug the hair clipper from the power source.
5. When the hair clipper is low on power, it should be connected to the charging cable and the power source for continued use.

USING RECHARGEABLE CORD/CORDLESS CLIPPER:

• **Fully charged battery:** The hair clipper can be used for up to 180 minutes. The time indicator is shown on display. It takes about 2.5-3 hours for a battery to charge fully.

• **If battery power is low:** The charging indicator light will be shown on display. You may attach a power cord to the unit and continue to use it as a corded hair clipper.

• **If the battery is completely empty:** Plug the charging cable into the unit, and the computer or a wall outlet. Allow the unit to charge for 1 minute (switched OFF), before you continue using it as a corded hair clipper.