

Müller

Ultra-Carver *Electric Knife*

Models:

EK-370GR and EK-370WH



USER MANUAL

Your satisfaction is guaranteed. If you are not completely satisfied with our Ultra-Carver Electric Knife, please let us know. We'll help make it work for you, or we'll refund your money.

IMPORTANT SAFEGUARDS

When using an electrical appliance, basic safety precautions should always be taken, including the following:

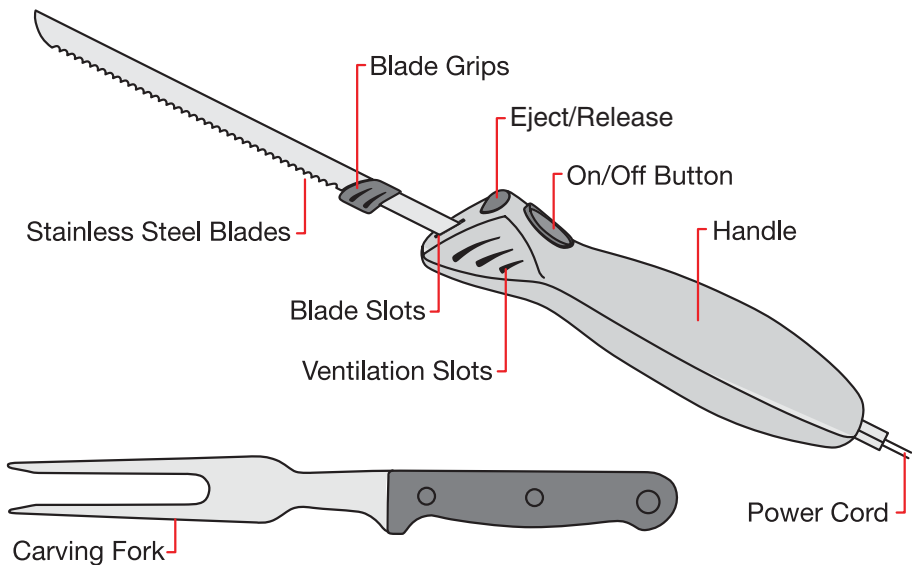
- **READ ALL INSTRUCTIONS.**

- Before connecting the power cord to a power socket, make sure that the voltage on its rating label corresponds to the voltage in the power socket to which you wish to connect it.
- Do not operate the appliance with a damaged cord or plug or after the appliance has malfunctioned, has been dropped or damaged in any way or is not operating properly. Contact the Mueller Customer Service.
- Do not use an extension cord — plug the power cord directly into a power socket.
- Ensure that the appliance is used on a stable, level, and heat resistant surface.
- Do not leave the appliance unattended while it is operating.
- To avoid the possibility of the knife being accidentally pulled off the work area, which could result in personal injury or damage to the knife, do not let the power cord hang over the edge of a table or counter.
- Unplug the power cord from a power socket when the appliance is not in use, before putting on or taking off blades, and before cleaning.
- Do not unplug by pulling on the cord. To unplug, grasp the plug, not the cord.
- Do not operate the knife in water or under running water.
- Do not operate the appliance with wet hands.
- To protect against the risk of electrical shock, do not put the knife handle in water or other liquid. If the handle with the power cord falls into liquids, unplug the cord from the power outlet immediately. Do not reach into the liquid.
- Do not use outdoors or anywhere where the cord, adapter, or knife might come into contact with water while in use.
- Do not operate the appliance outdoors or in areas exposed to moisture, such as basements or garages.
- Do not operate where aerosol (spray) products are being used or where oxygen is being administered.
- DO NOT touch the moving parts. Keep hands, hair, clothing, and other utensils away from the blades during operation to reduce the risk of injury to persons and/or damage to the knife.
- Make sure that the motor and blades have completely stopped before removing blades from the Blade Slots.

- **BLADES ARE SHARP! Handle carefully! Always handle blades with hands away from cutting edge.**
- The use of attachments not recommended by Mueller may cause fire, electrical shock, or risk of injury.
- Never drop or insert any object into any opening.
- This product is intended for cutting/slicing bread, fruit, vegetables, or meats without bones. Do not use it for any purpose other than its intended use.
- Children should not use this appliance. Care should be taken when using this appliance near children.
- This appliance is not intended for use by persons (including children) with reduced physical, sensory or mental capabilities, or lack of experience and knowledge unless they have been given supervision or instruction concerning use of the appliance by a person responsible for their safety.

SAVE THESE INSTRUCTIONS FOR HOUSEHOLD USE ONLY

PRODUCT DESCRIPTION



BEFORE FIRST USE

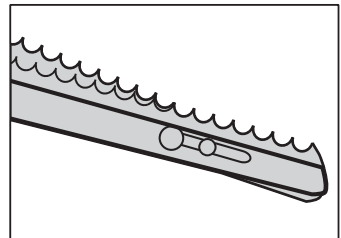
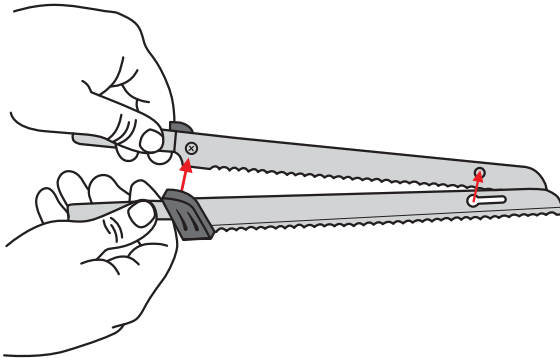
- Remove the appliance and all accessories from the packaging.
- Wipe the unit with a clean, damp cloth. Dry it thoroughly with a soft, absorbent cloth.
- Wash the blades in warm, soapy water before use. Rinse and dry thoroughly.
- Your appliance is now ready for normal use.

OPERATING INSTRUCTIONS

CAUTION! Always unplug the appliance from the power socket before inserting or removing the blades and make sure that your fingers are always away from the sharp cutting edge.

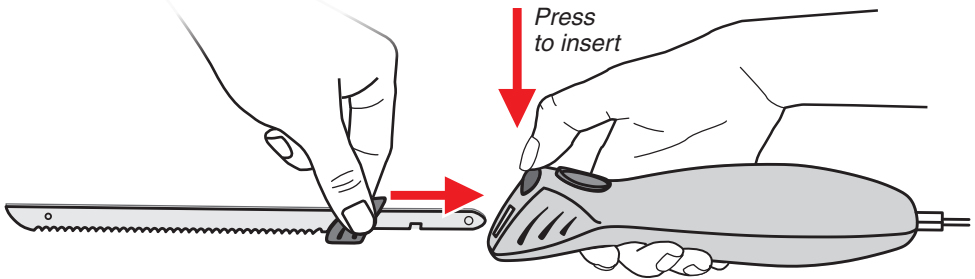
ASSEMBLING BLADES

- Hold the blade ends by the Blade Grips.
- Lay both blades parallel to each other and insert the rivet on one blade into the keyhole of the other blade.
- Slide blades together lightly, ensuring the tips are interlocked.



INSERTING BLADES

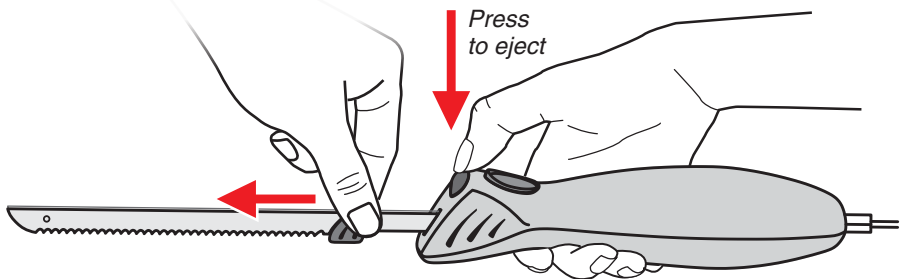
- Ensure the appliance is unplugged.
- With the cutting edge facing down, hold both blades together at the Blade Grips and slide them into the Blade Slots while holding the 'Eject' button at the same time. Push in until both blades are locked into position. Release the 'Eject' button.
- Check whether each blade is locked in place by gently pulling on the Blade Grips to ensure the blades do not come out.



WARNING: TO PREVENT INJURY, DO NOT INSERT BLADES WHEN THE UNIT IS PLUGGED IN.

REMOVING BLADES

- Unplug the appliance from the power socket.
- Press the Eject Button with one hand and at the same time pull the blades by the Blade Grips with the other hand.



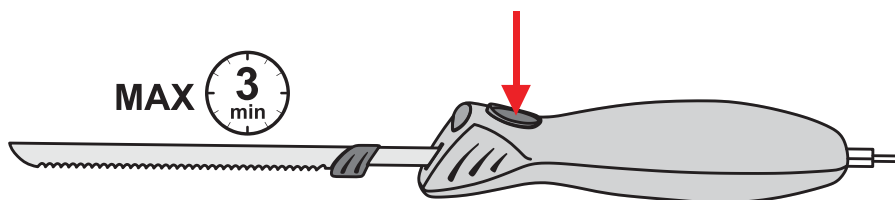
WARNING: TO PREVENT INJURY, DO NOT REMOVE BLADES WHEN THE UNIT IS PLUGGED IN.

HOW TO USE

NOTE: Always ensure blades are fully secured into the Blade Slots before operating the Electric Knife.

- Insert the power plug into a power socket.
- Place the food on a cutting board.
- Holding the knife by the Handle, press and hold the On/Off Button to operate the knife.
- To cut the food, simply guide the blades through the food. It is not necessary to move the knife back and forth, as the double cutting action of the two blades will slice the food quickly and easily.
- To turn off the knife, release the On/Off Button.
- When slicing is completed, remove the power plug from the power socket.

NOTE: The knife can be operated continuously for a maximum of 3 minutes. Allow the knife to cool down to room temperature before continuing to operate it.



SLICING TIPS

- Always place food to be sliced on a wooden or plastic cutting board. Do not slice food on china, metal, or bench tops as scratching may occur.
- Guide blades through food. Sawing action is not necessary. Do not force the blades through food.
- Do not cut through bones, fruit pips, stones, or any other hard substances.
- When carving meat and poultry, for best results, allow cooked meat to stand for 10-15 minutes before slicing. This allows the juices to set and makes carving easier and neater.
- Before carving meat or chicken, remove any skewers.
- A carving fork (provided) is recommended for steadying the meat and assists in carving even slices.

CLEANING AND MAINTENANCE

WARNING: Do not immerse the appliance in water or other liquids or place it under running water.

- Before cleaning, disconnect the appliance from the power socket and carefully remove the blades.
- Wash the blades in warm/hot water with a mild detergent and a soft cloth or sponge. Rinse thoroughly and dry completely before the next use. Do not use abrasive scouring pads on the blades.
- Blades are dishwasher safe.
- To clean the Handle, wipe with a soft damp cloth and then dry thoroughly.

CAUTION: Do not clean the Handle with blades in place.

- Do not attempt to sharpen the blades.
- To store your Electric Knife, clean thoroughly as described above, ensuring that the appliance is completely dry before storing. Store in a safe place out of the reach of children.

WARNING: Make sure not to allow the serrated teeth of the blades to come into contact with the power cord, as this may cause damage and a safety hazard.

TECHNICAL SPECIFICATIONS

Rated voltage: 120V ~ 60Hz

Rated power: 100W

Maximum operating time: 3 minutes per cycle/cool down to room temperature between cycles

Müller



Your purchase comes with a 100% satisfaction guarantee from Müller

If you are not happy with the product for any reason, please contact us at support@muellerhome.us with your feedback or questions, and we will do our best to make things right for you!

Müller USA

168 Mason Way Unit #4A, City of Industry, CA 91746

E-mail: support@muellerhome.us

Web: www.muellerhome.us